

Josephine

1828 sq. ft.

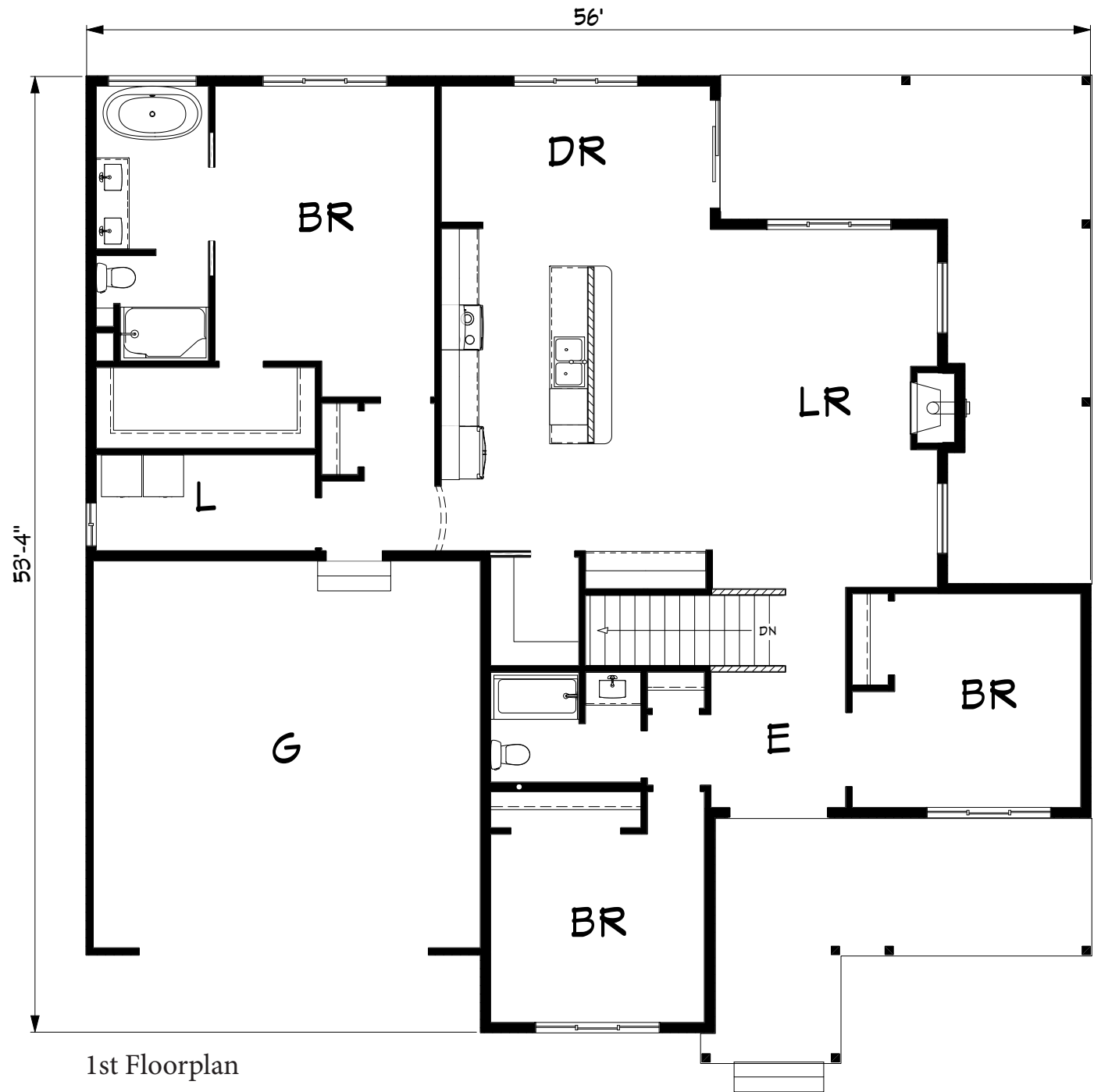
1828 sq. ft.



Bathroom



Kitchen



1st Floorplan

The Josephine has an open floor plan with a farmhouse feel. A spacious wraparound porch in the back, a galley-style kitchen, three bedrooms, a sizeable master closet, and a good-sized laundry room, it makes impressive use of the square footage while staying under 1900 square feet total.