

Madeline

1360 sq. ft.

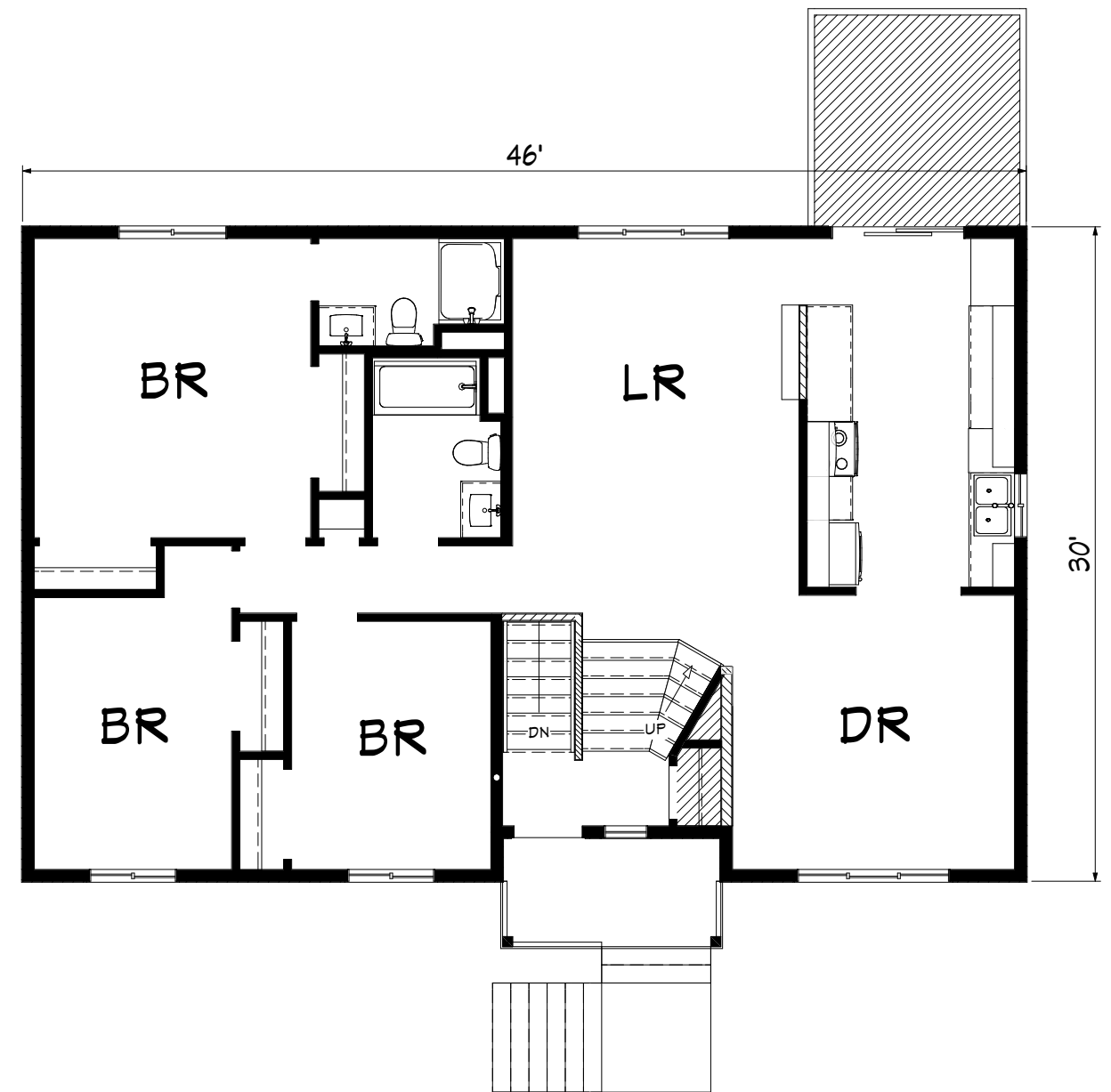
1360 sq. ft.



Kitchen



Dining Room



Floorplan

This small split-level has a lot to offer both outside and inside. The entry includes wide stairs that invite guests into the living room. The main living area offers plenty of space for entertaining, as well as both formal and informal dining areas. Large windows help to brighten up the space with natural sunlight. With three bedrooms, two bathrooms, and plenty of additional space in the basement, it is the perfect starter home for any growing family.