

# Fullerton

2163 sq. ft.

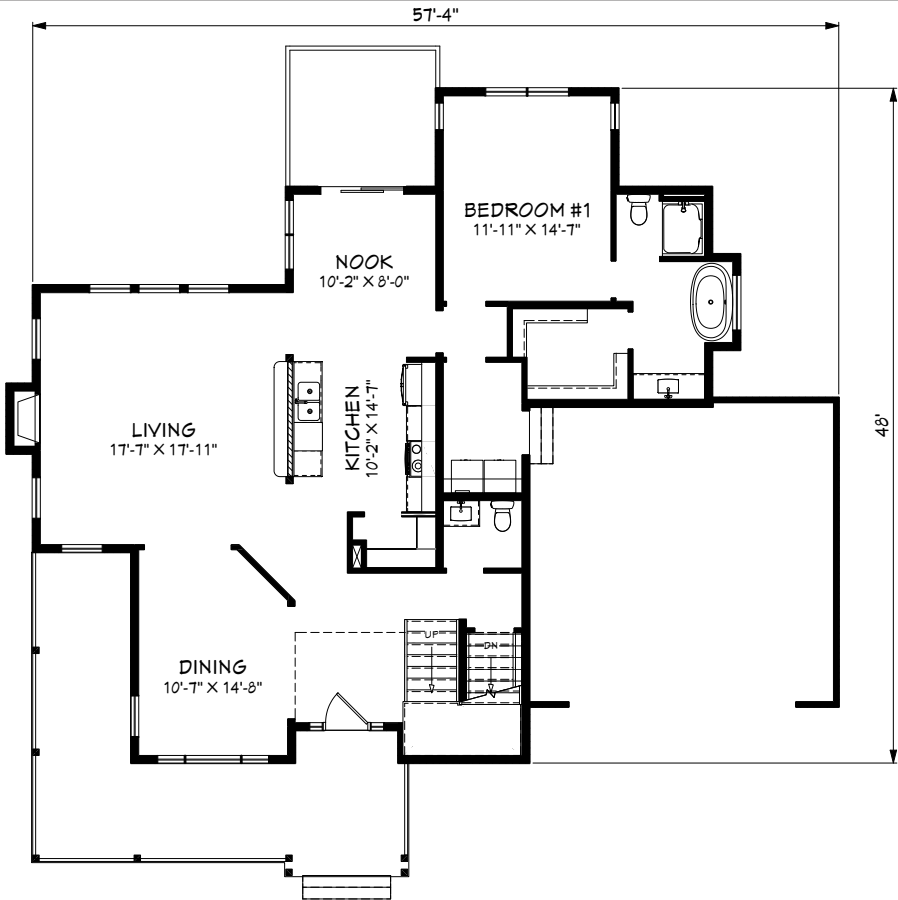
2163 sq. ft.



Primary Bathroom

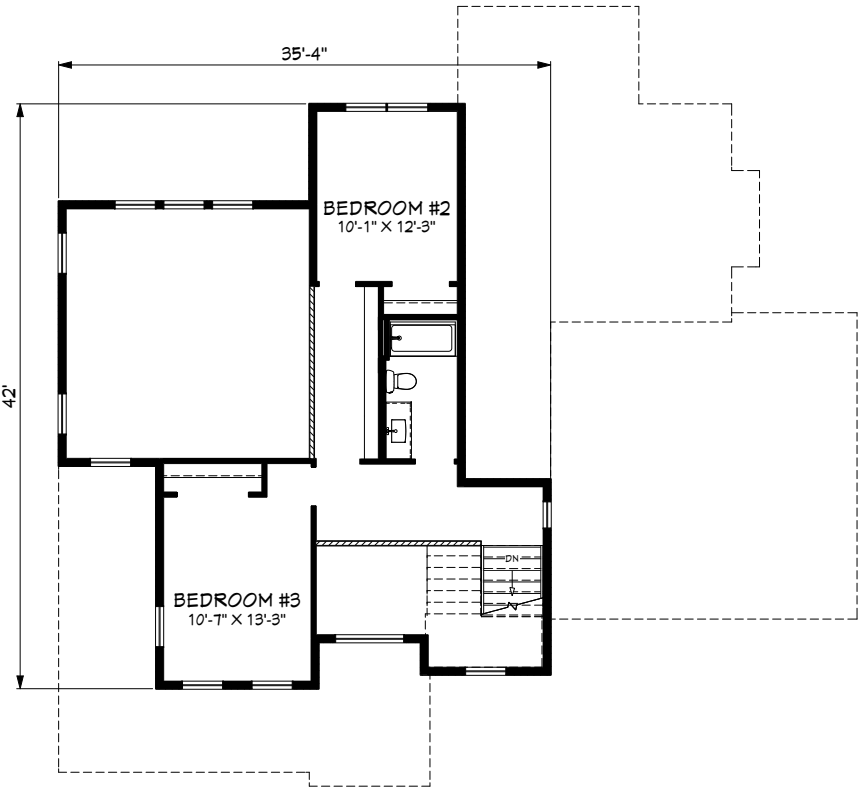


Living Room



1st Floor Plan

The Fullerton is a unique home with a spectacular layout, which lends itself to taking on a more modern appearance or a traditional one. The entry and living room are open to the second floor creating an abundance of natural light.



2nd Floor Plan